



VAL DE VIE  
ANNO 1783

EVERGREEN  
lifestyle

*Luxury Suites*



*Life Extraordinary*

RETIRES 65 YEARS AND OLDER

**Now's the time to take charge of your next chapter.**

At Val de Vie Evergreen, set in the heart of Val de Vie Estate in the Paarl-Franschoek valley, discover a lifestyle that combines safety, a focus on wellness and the warmth of a community that cares. Choose your light, bright and modern Luxury Suite on either the ground floor or the first floor (accessible with a lift).





*Welcome to the days  
that are designed  
around peace of mind.*





## VAL DE VIE EVERGREEN VILLAGE | LIFESTYLE CENTRE

VILLAGE MANAGEMENT SUITE & CONCIERGE SERVICES | SOCIAL LOUNGE  
RESTAURANT & DELI SERVICES | GAMES ROOMS | ARTS & CRAFTS STUDIOS | LIBRARY WITH READING  
ROOM | AUDITORIUM | CONFERENCE FACILITIES | MOVIE THEATRES | BUSINESS LOUNGE | EXPANSIVE  
MULTIPURPOSE SPACE FOR COMMUNITY GATHERINGS, EVENTS & PERFORMANCES | LIFESTYLE GYM  
INDOOR SWIMMING POOL | STUDIOS FOR FITNESS CLASSES | SPA, HAIR SALON & RELAXATION AREAS  
WELLNESS PROFESSIONAL OFFICES | LARGE CENTRAL COMMUNAL GARDENS | MULTI-SPORT COURTS,  
BOWLS & CROQUET GREENS | WALKING PATHS | OUTDOOR ENTERTAINMENT SPACES

## LUXURY SUITES SPECIFICATIONS

AIR CONDITIONING  
DOUBLE GLAZED WINDOWS  
ELECTRICAL OVEN & CERAMIC  
HOB WITH EXTRACTOR  
LED LIGHTS | HIGH SPEED FIBRE  
CONNECTION | ENGINEERED  
STONE COUNTER TOPS  
HANS GROHE TAPS  
VINYL FLOORING  
GEBERIT SANITARYWARE  
COVERED PARKING SPACE  
POWER BACK-UP DURING  
LOAD SHEDDING



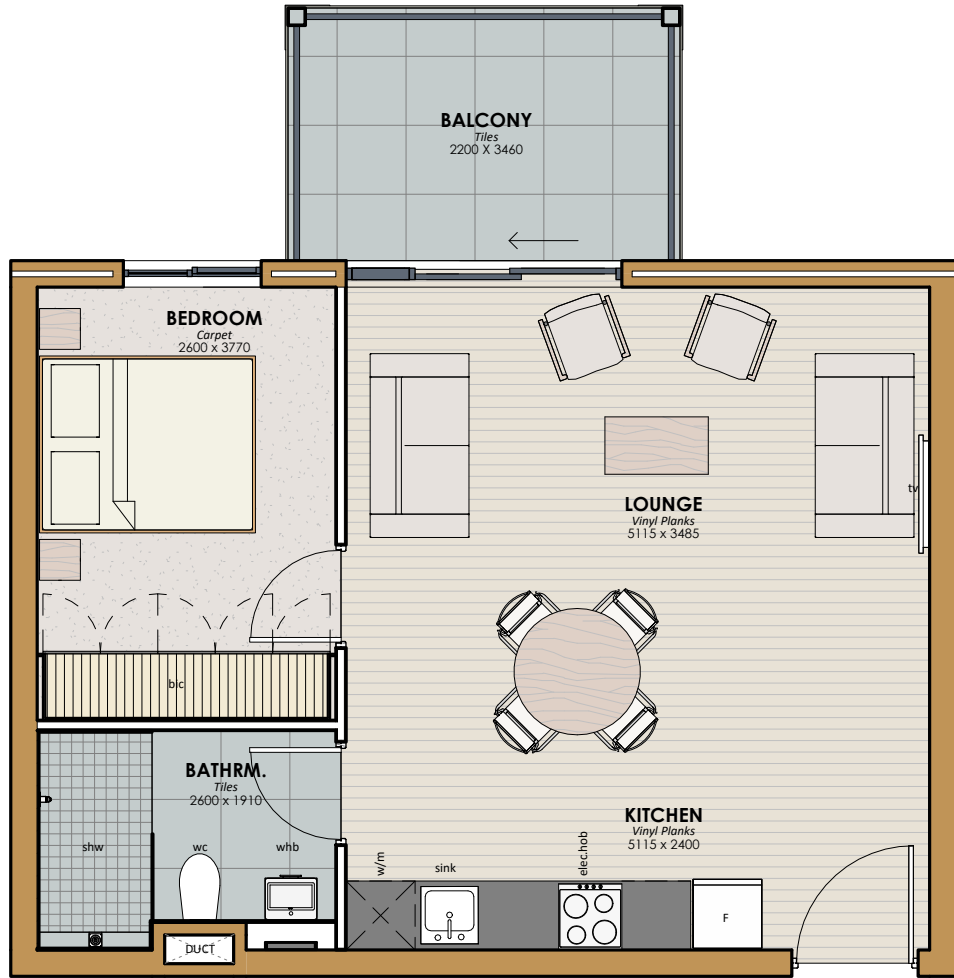
# FLOOR PLAN - TYPE A

**TYPE A - (44m<sup>2</sup>)**



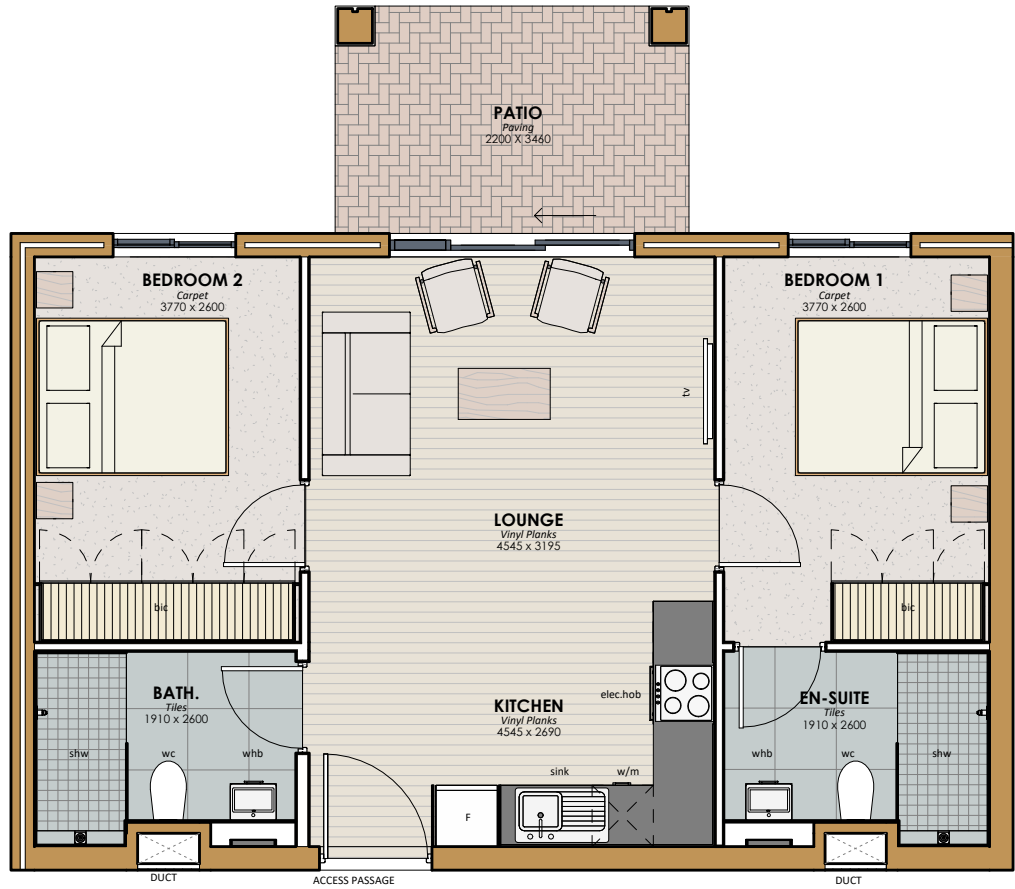
FLOOR PLAN - TYPE C

TYPE C - (57m<sup>2</sup>)



FLOOR PLAN - TYPE D

TYPE D - (66m<sup>2</sup>)

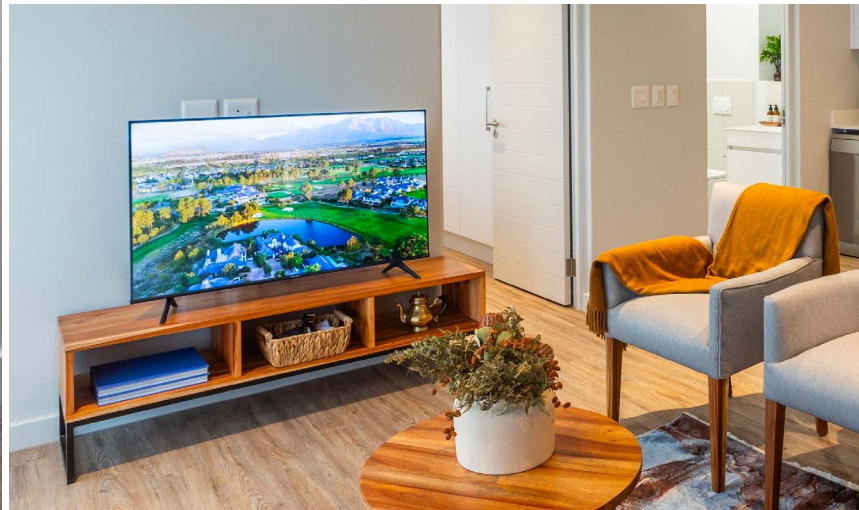




FLOOR PLAN - TYPE E

TYPE E - (62m<sup>2</sup>)





**FURNITURE PACKAGE IN COLLABORATION WITH PENCIL AND OAK INTERIORS**

FRIDGE/FREEZER | WASHING MACHINE | MICROWAVE | KETTLE | TOASTER  
2-SEATER SOFA | EASY CHAIRS | SIDE TABLES | BAR STOOLS | COFFEE TABLE | LED TV  
QUEEN SIZED BED | BEDSIDE TABLES | CURTAINS | DINNERWARE



PENCIL & OAK  
INTERIORS

# RENT *to* OWN

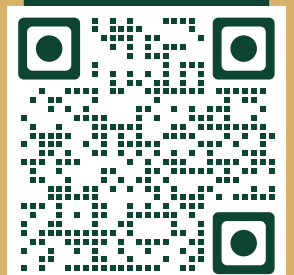
Take your *first* step towards luxury retirement

*65 Years & Older*

*Rent a one bedroom Luxury Suite for R16 000 per month with the opportunity to buy within six months.  
Deduct the initial six months' rent from the purchase price upon exercising the option.*



SCAN HERE FOR  
MORE INFORMATION





Artist's impression

**VAL DE VIE<sup>®</sup>**  
**PROPERTIES**  
*We know Val de Vie Estate best*

- ☎ +27 (0)21 863 6105
- ✉ [property@valdevie.co.za](mailto:property@valdevie.co.za)
- 🏠 [valdevieevergreen.co.za](http://valdevieevergreen.co.za)